



CHICAGO CORINTHIAN YACHT CLUB



SAILING INSTRUCTIONS - AMENDMENT #1 -- Spring Opener Long Distance --

1. GENERAL

1.1. This is the Fourth Annual Spring Opener Long Distance Race to be run simultaneously with the Spring Opener buoy race.

2. CLASS BREAKS & STARTING TIMES‡

2.1. Tentative Class Breaks & Starting times

| Class | Rating Band | Signal Flag | Warning | Start |
|-------|-----------------|-------------|---------|-------|
| 1 | - infinity > 50 | 1 | 1035 | 1040 |
| 2 | 51 > + infinity | 2 | 1030 | 1035 |

‡ Section breaks will be set and POSTED ON-LINE by 1030 hours on Friday prior to race(s). Class starts may be combined by the RC.

3. COURSE

3.1. A course will be chosen by the Race Committee from the following list. The chosen course's letter designation shall be displayed on a white mark up board by the Race Committee no later than 10 minutes prior to the first warning signal. The Race Committee may or may not also fly a pennant with the course's letter designation. To the extent possible the Race Committee shall also broadcast the choice of course on channel 78 VHF. There are 10 possible courses. The denotation "P" or "S" after the name of the mark indicates the side on which the mark shall be passed. Otherwise, marks are to be left on the side noted after the course length.

3.2.

| | | |
|------|---|-----------------------|
| E: | SA1 > E2 > SE2 > R4 > 4 Mile Crib > FIN | (22.88 NM, STARBOARD) |
| N: | SA1 > V > T > SE2 > 4 Mile Crib > FIN | (19.97 NM, STARBOARD) |
| NE: | SA1 > T > SE2 > 4 Mile Crib > FIN | (17.85 NM, STARBOARD) |
| NE-: | SA1 > T > SE2 > Dever Crib > FIN | (13.74 NM, STARBOARD) |
| NW: | SA1 > NW > V > T > SE2 > 4 Mile Crib > FIN | (20.24 NM, STARBOARD) |
| S: | SA1 > S > 4 Mile Crib > T > V > FIN | (19.60 NM, PORT) |
| S-: | SA1 > S > SE2 > V > FIN | (13.76 NM, PORT) |
| SE: | SA1 > SE2 "S" > 4 Mile Crib "S" > T "P" > V "P" > FIN | (21.05 NM) |
| SW: | SA1 > SW > 4 Mile Crib > T > V > FIN | (20.07 NM, PORT) |
| W: | SA1 > W > V > T > SE2 > 4 Mile Crib > FIN | (20.80 NM, STARBOARD) |



CHICAGO CORINTHIAN YACHT CLUB



SAILING INSTRUCTIONS - AMENDMENT #1 -- Spring Opener Long Distance --

3.3. CCYC MAINTAINED MARKS

| CCYC MARKS | Note | Color | Approximate Latitude/Longitude | | Description |
|------------|--------------------|--------------|--------------------------------|-------------|-----------------------------|
| CP (SA1) | | Orange | N41.57.740 | W087.36.400 | CCYC center pin |
| N | 360 T, .75NM > CP | Orange/White | N41.58.490 | W087.36.400 | CCYC north mark |
| NE | 045 T, .75NM > CP | White | N41.58.270 | W087.35.690 | CCYC northeast mark |
| E | 090 T, .75NM > CP | White | N41.57.740 | W087.35.400 | CCYC east mark |
| SE | 135 T, .75NM > CP | White | N41.57.210 | W087.35.690 | CCYC southeast mark |
| S | 180 T, .75NM > CP | White | N41.56.990 | W087.36.400 | CCYC south mark |
| SW | 225 T, .75NM > CP | White | N41.57.210 | W087.37.110 | CCYC southwest mark |
| W | 270 T, .75NM > CP | White | N41.57.740 | W087.37.400 | CCYC west mark |
| NW | 315 T, .75NM > CP | White | N41.58.270 | W087.37.110 | CCYC northwest mark |
| V | 001 T, 3.0 NM > CP | White | N42.00.740 | W087.36.400 | CCYC distant north mark |
| T | 045 T, 3.4 NM > CP | White | N42.00.120 | W087.33.070 | CCYC distant northeast mark |
| E2 | 090 T, 3.0 NM > CP | White | N41.57.740 | W087.32.400 | CCYC distant east mark |
| SE2 | 135 T, 4.0 NM > CP | White | N41.55.830 | W087.31.630 | CCYC distant southeast mark |

4. SAFETY

4.1. Yachts shall be equipped according to CASRA Nearshore Safety Requirements

5. FINISHING

5.1. The finish line will be between an orange flag flown on shore located on the southern side of Montrose point at an approximate position of N 41.57.721 W 087.38.049 and an orange tetrahedron located at approximately N 41.57.676 W 087.37.736 (about 300 yards offshore). Boats are to pass through this line in the same approximate course as taken from the first previous mark to the finish. **Sail number boards must be displayed on the shore side of the boat at the finish.** The material used in the construction of the sail number board is optional.

5.2. No yacht finish report shall be required. Boats are to contact the race committee on channel 78 approximately one half mile before they finish. Upon finishing boats are required to contact the race committee and report their finish time according to GPS time and shall receive confirmation from the Race Committee that they have finished.

6. TIME LIMIT

6.1. The time limit shall be 17:00 hours plus any time between a class' scheduled start and the actual start due to postponement or recall. Any boat which withdraws from the race after the start shall report their withdrawal to the Race Committee on channel 78 at their first opportunity.



CHICAGO CORINTHIAN YACHT CLUB



SAILING INSTRUCTIONS - AMENDMENT #1 -- Spring Opener Long Distance --

7. DOCKAGE

7.1. Rafting privileges will be extended for entered yachts. There is no need to contact the harbor master. All are welcome to enter the harbor and tie up.

8. SOCIAL ACTIVITIES

8.1. The Corinthian Race Weekend Party will be held after Saturday's racing. Entertainment begins about 7:00 p.m. Have dinner and celebrate the beginning of the racing season!

SEE FOLLOWING PAGES FOR COURSE DIAGRAMS.



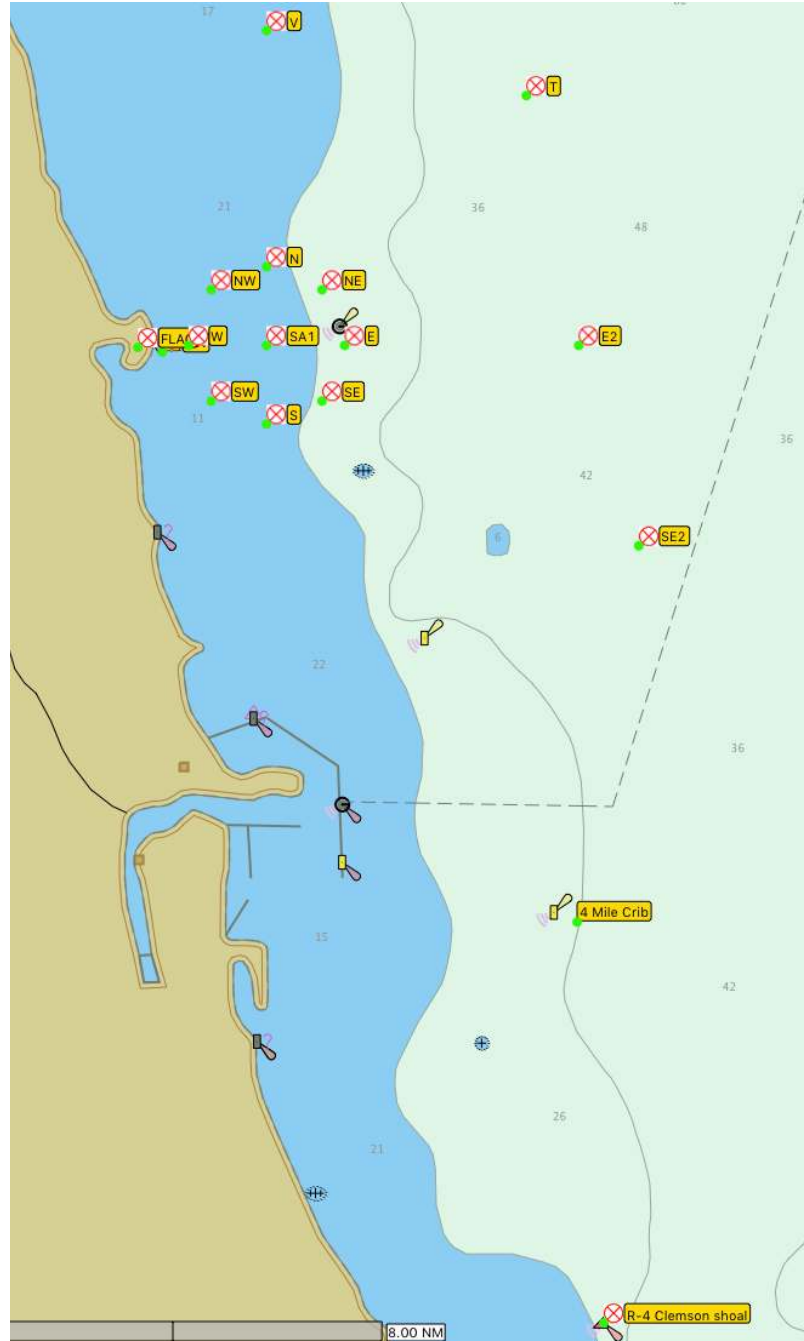
CHICAGO CORINTHIAN YACHT CLUB



SAILING INSTRUCTIONS - AMENDMENT #1 -- Spring Opener Long Distance --

COURSE DIAGRAMS

- ALL MARKS DEPICTED



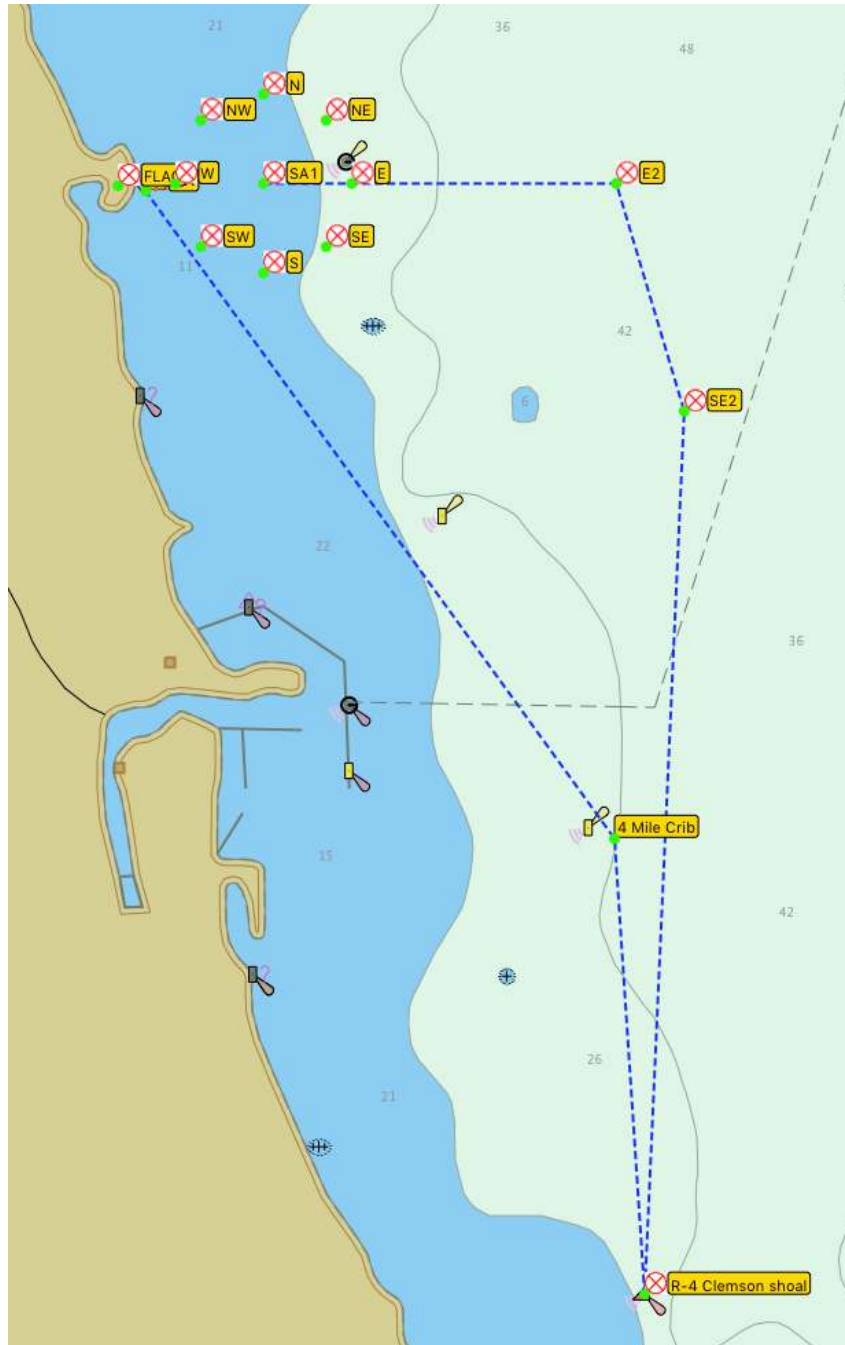


CHICAGO CORINTHIAN YACHT CLUB



SAILING INSTRUCTIONS - AMENDMENT #1 -- Spring Opener Long Distance --

COURSE "E" (22.96NM)



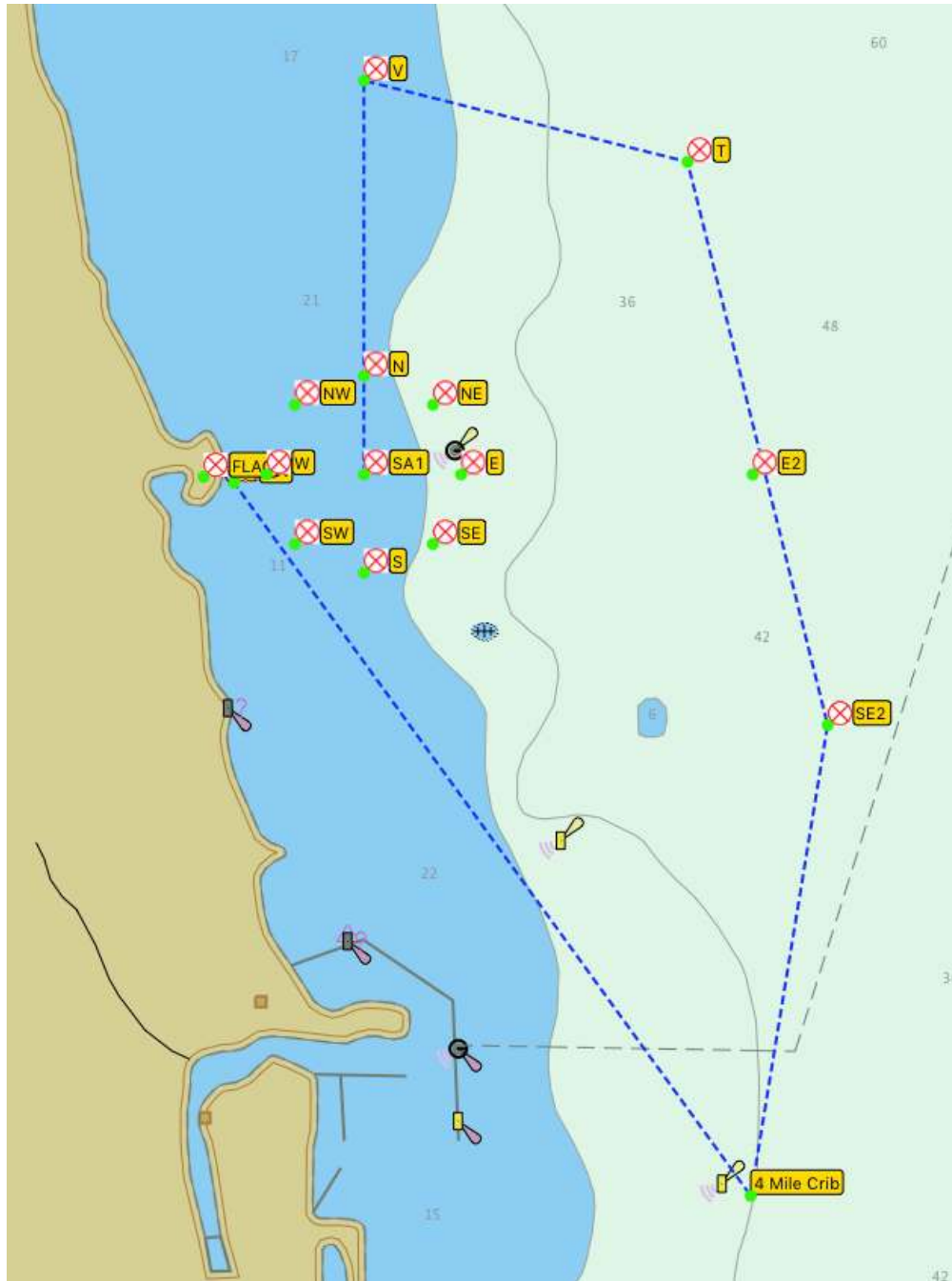


CHICAGO CORINTHIAN YACHT CLUB



SAILING INSTRUCTIONS - AMENDMENT #1 -- Spring Opener Long Distance --

COURSE "N" (20.33NM)



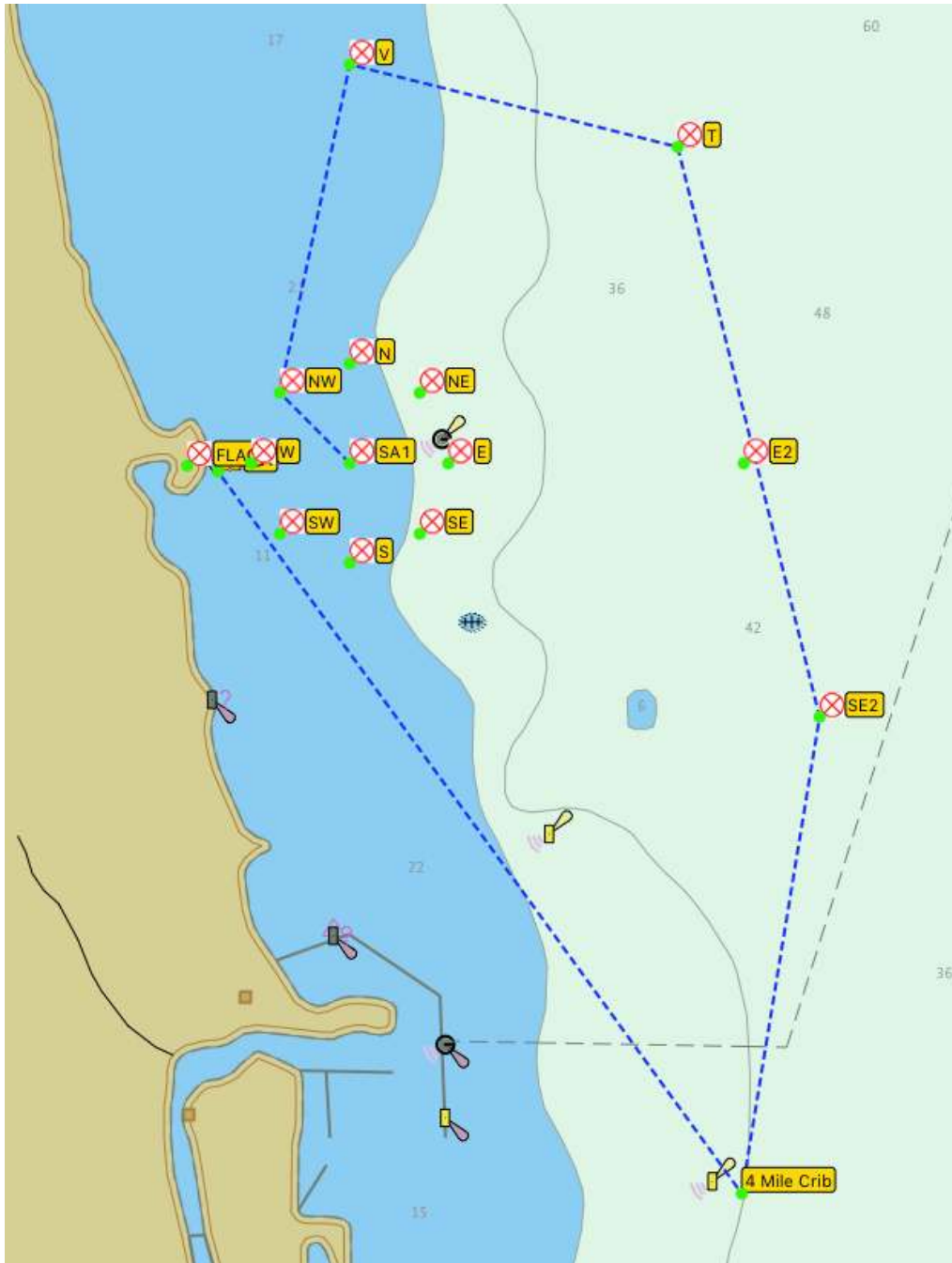


CHICAGO CORINTHIAN YACHT CLUB



SAILING INSTRUCTIONS - AMENDMENT #1 -- Spring Opener Long Distance --

COURSE "NW" (20.61NM)



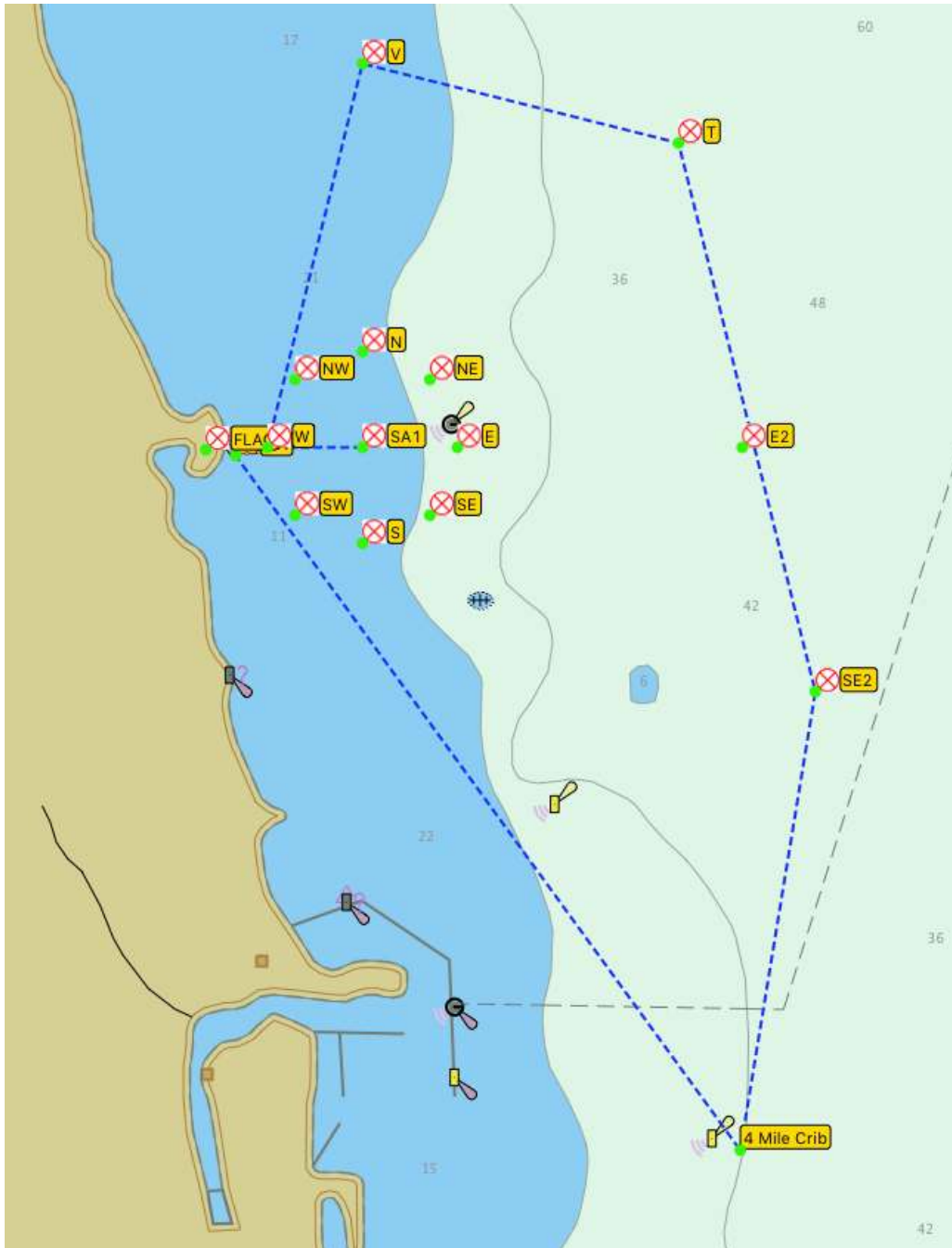


CHICAGO CORINTHIAN YACHT CLUB



SAILING INSTRUCTIONS - AMENDMENT #1 -- Spring Opener Long Distance --

COURSE "W" (21.17NM)



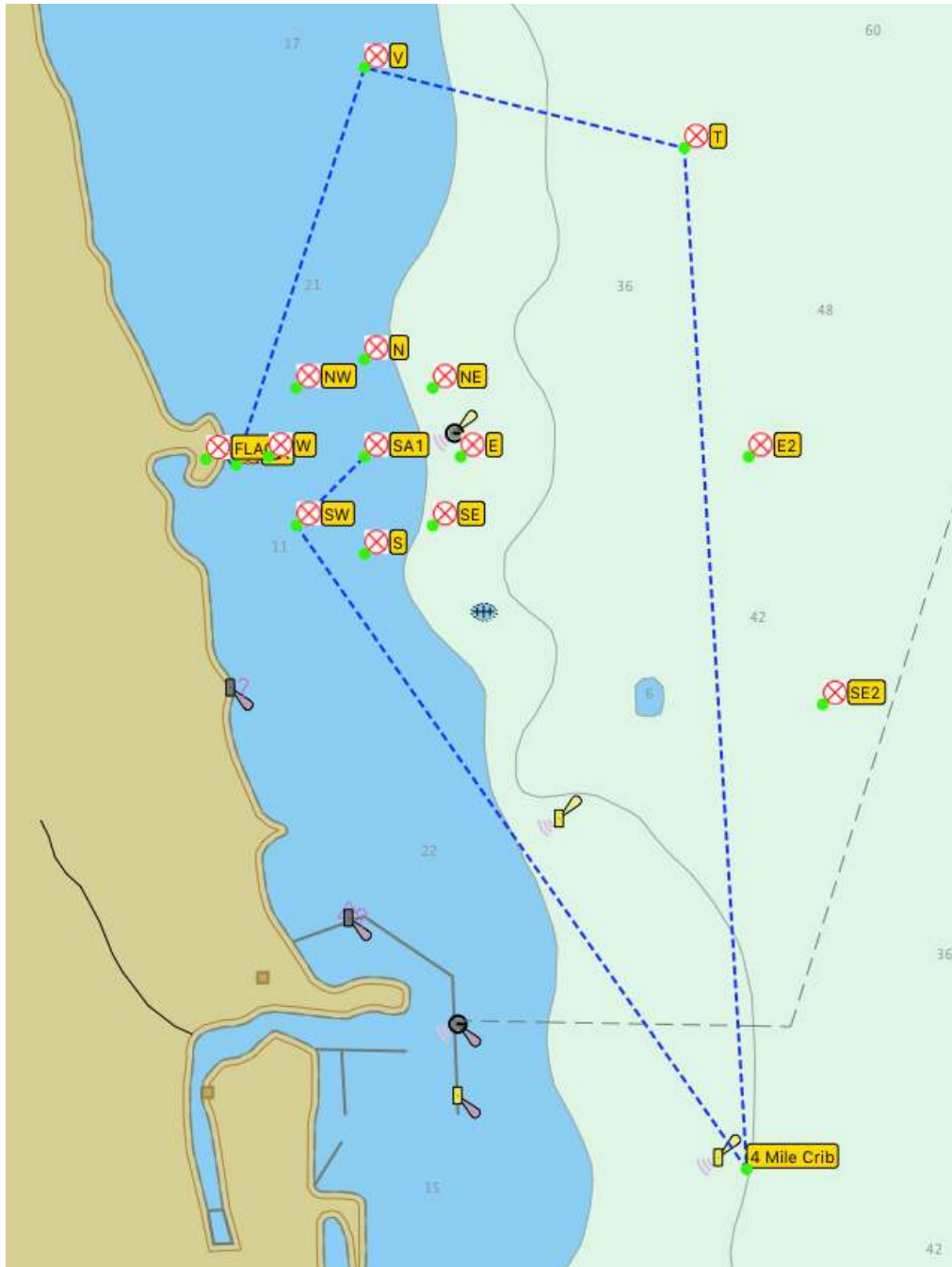


CHICAGO CORINTHIAN YACHT CLUB



SAILING INSTRUCTIONS - AMENDMENT #1 -- Spring Opener Long Distance --

COURSE "SW" (20.49NM)



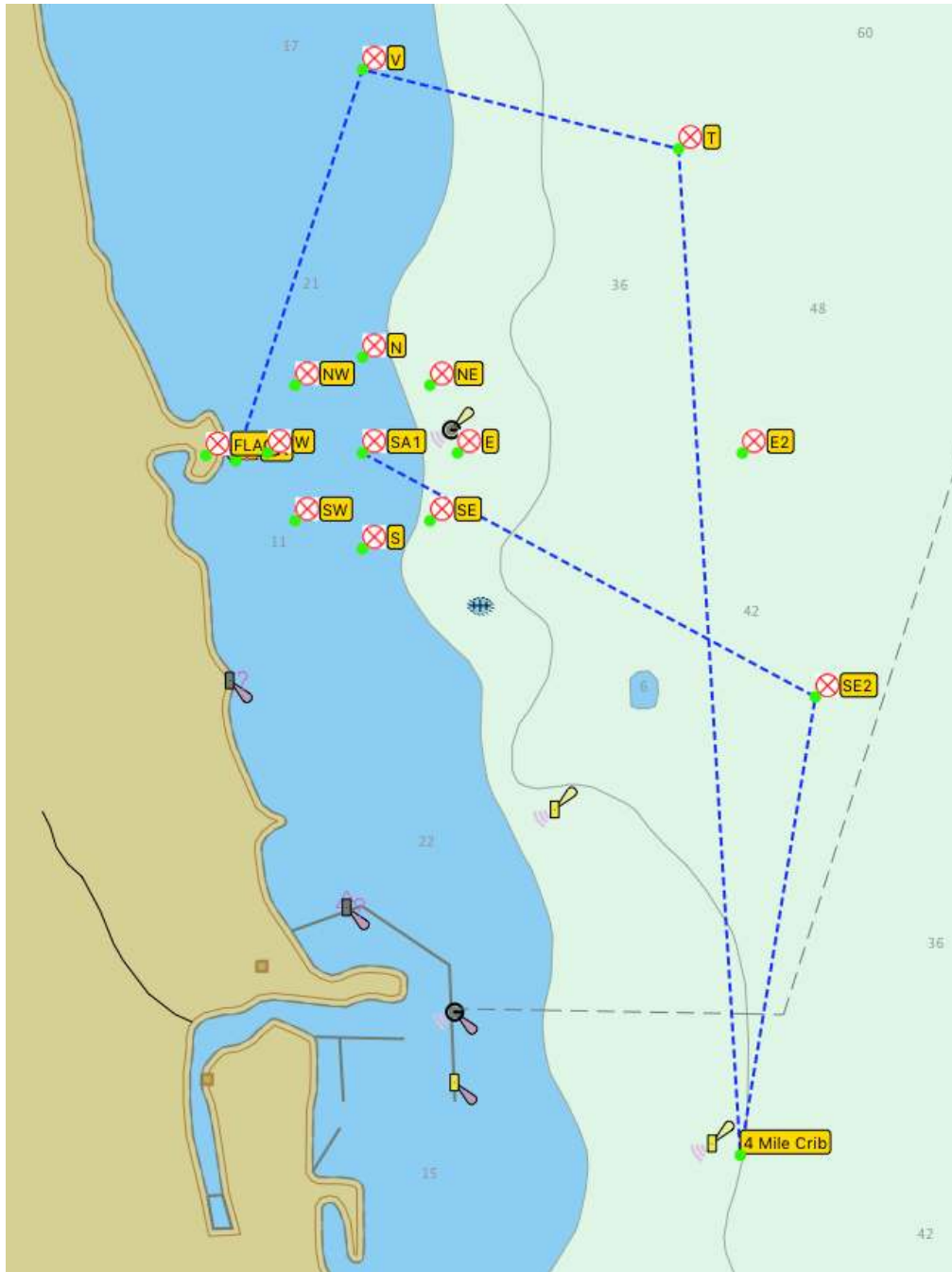


CHICAGO CORINTHIAN YACHT CLUB



SAILING INSTRUCTIONS - AMENDMENT #1 -- Spring Opener Long Distance --

COURSE "SE" (21.33NM)



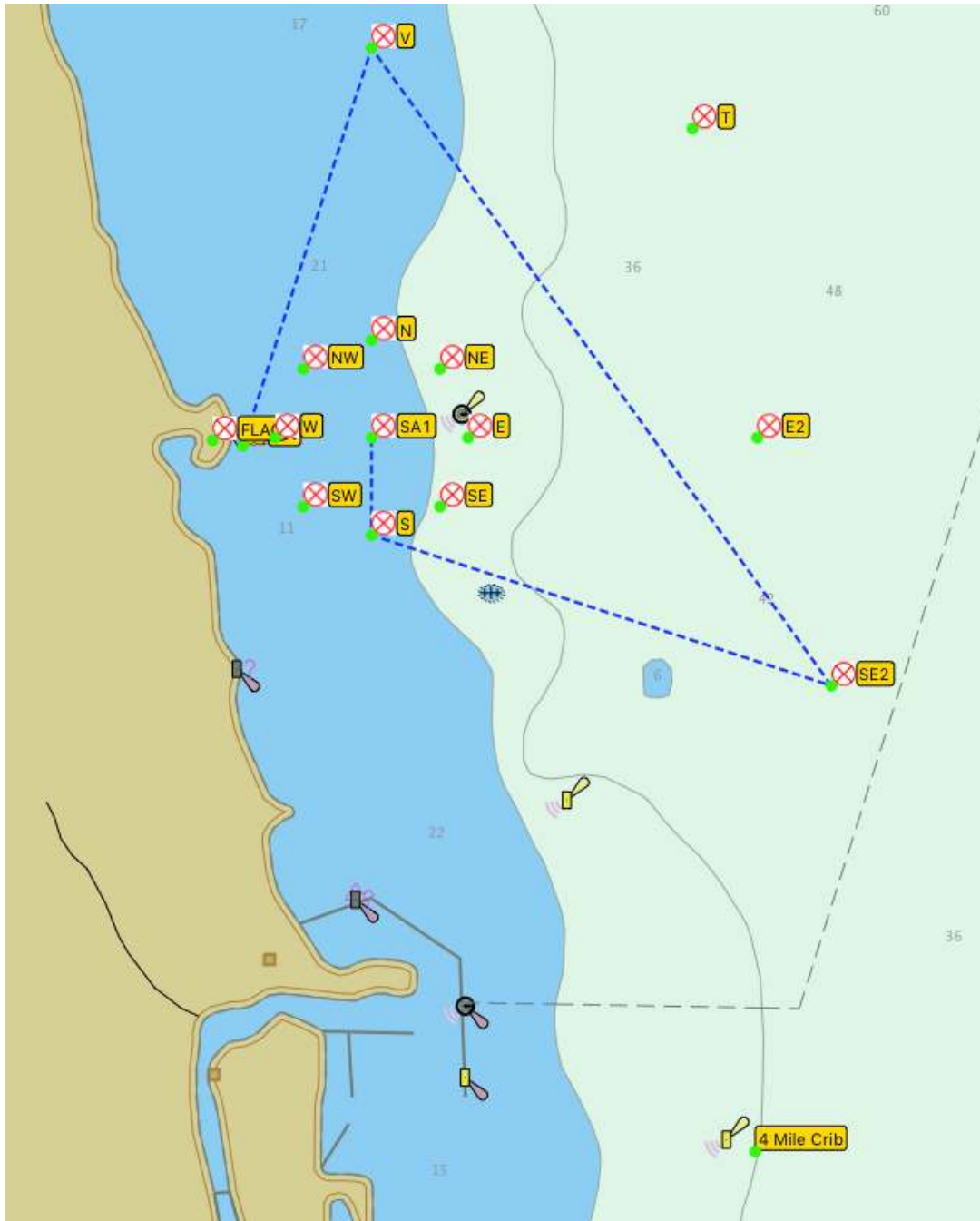


CHICAGO CORINTHIAN YACHT CLUB



SAILING INSTRUCTIONS - AMENDMENT #1 -- Spring Opener Long Distance --

COURSE "S-" (13.76NM)



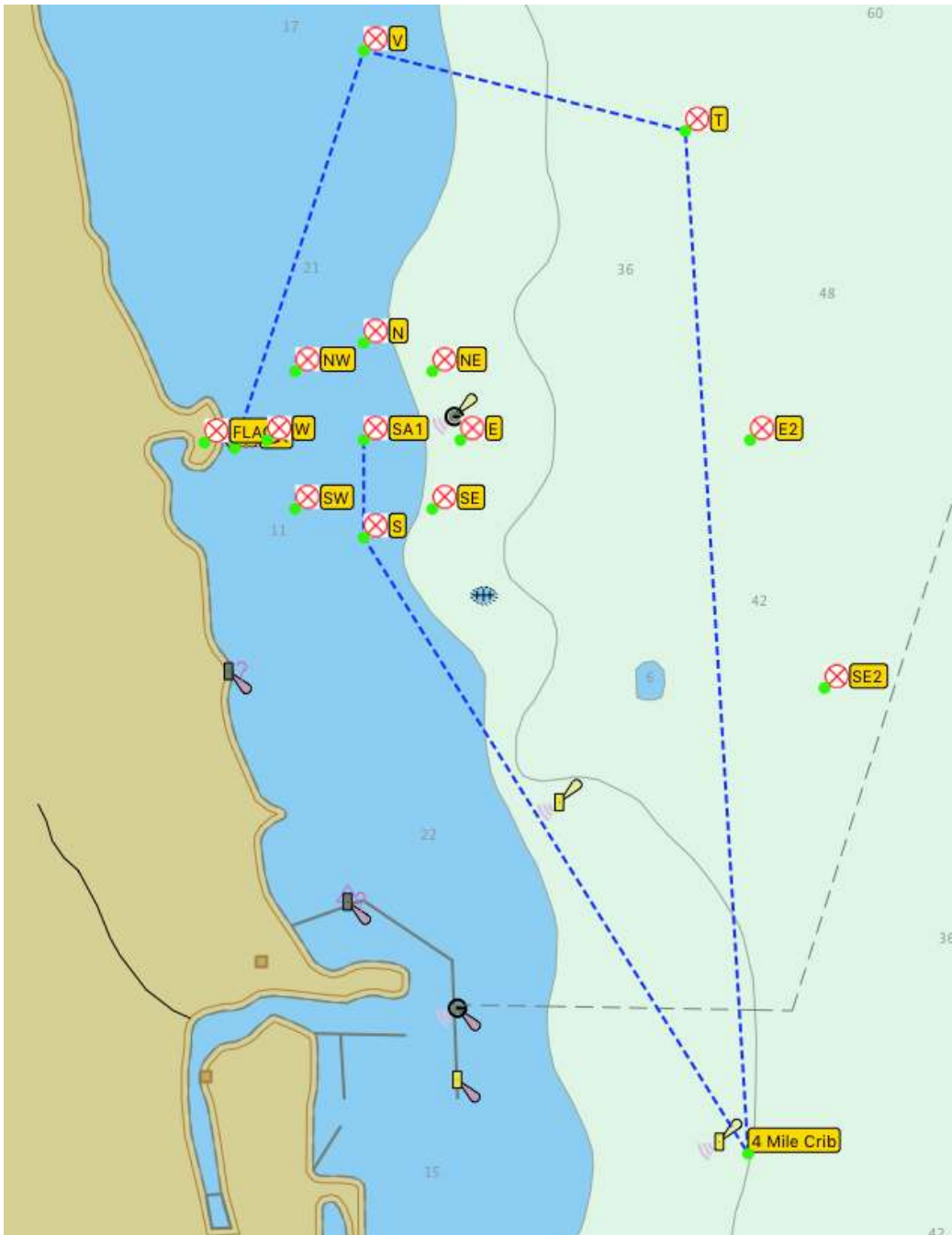


CHICAGO CORINTHIAN YACHT CLUB



SAILING INSTRUCTIONS - AMENDMENT #1 -- Spring Opener Long Distance --

COURSE "S" (20.01NM)



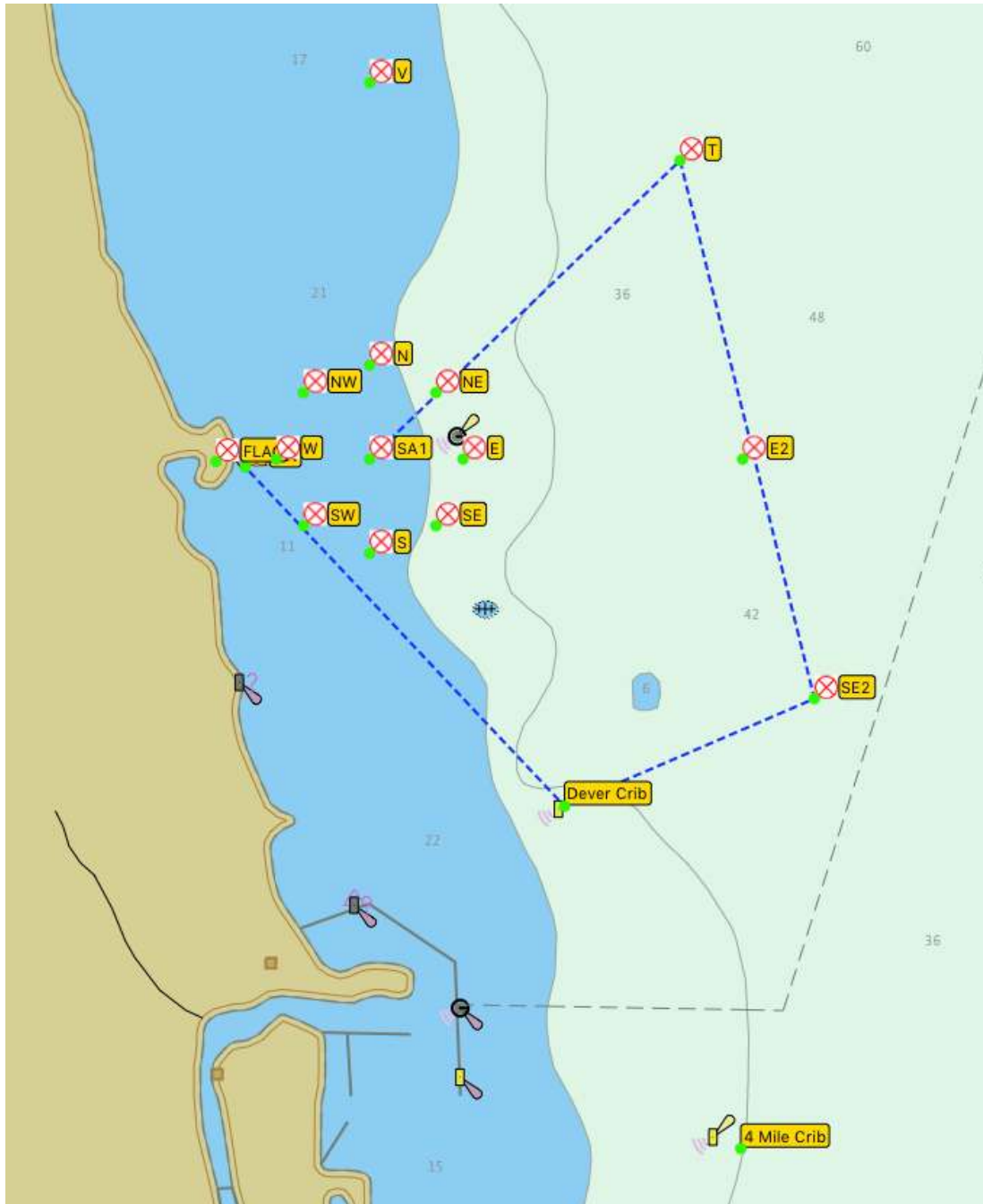


CHICAGO CORINTHIAN YACHT CLUB



SAILING INSTRUCTIONS - AMENDMENT #1 -- Spring Opener Long Distance --

COURSE "NE-" (13.74NM)





CHICAGO CORINTHIAN YACHT CLUB



SAILING INSTRUCTIONS - AMENDMENT #1 -- Spring Opener Long Distance --

COURSE "NE" (18.22NM)

